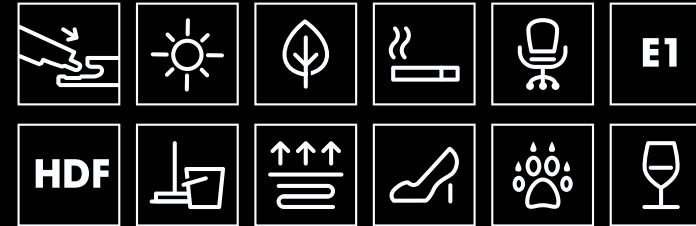


50
YEARS

FLOORPAN **ARTFLOOR**
'Laminate Flooring' 'Laminate Flooring'

USER MANUAL

 **kastamonu**



THE ADVANTAGES OF FLOORPAN, ARTFLOOR LAMINATED FLOORING

- Hygienic.
- Maintains its superior form for years.
- Can be installed and disassembled easily due to click lock.
- Easily cleaned.
- Resistant to scratch.
- Many decor and surface alternatives.
- Resistant to UV rays.
- Resistant to household chemicals.
- Suitable to E1 norms and resistant to the growth of mold and bacteria.
- Energy saving.
- Stain-resistant.





MEET "HYGIENE+" THE PARQUET SERIES WHICH OFFERS EXTRA HYGIENE FOR YOUR LIVING AREAS AND FOR WHOM YOU LOVE!

Keeping your living areas clean and free from bacteria is an important factor for you and whom you love. Bacteria can be shown as the main cause of many infectious diseases. Allergy, asthma and pneumonia can be shown as diseases which are in relation with these bacteria. However, the Hygiene+ will not allow the bacteria to grow and will protect your health. Hygiene+ has proved to prevent bacteria and bacterial activity up to 99.9% with the Ekoteks laboratory test results.

Test Method: JIS Z 2801:2012



FLOORPAN, ARTFLOOR

LAMINATE FLOORING

DIMENSIONS



- 1 OVERLAY**
High quality surface protection resistant to wear and scratch
- 2 DECOR PAPER**
Reflecting the characteristics of the product with a unique design
- 3 HDF**
Strong base panel, resistant to high pressure produced as per E1 norm
- 4 BALANCE PAPER**
Protects against humidity and distortion

LAMINATE FLOORING CLASSIFICATION

CLASS	21	22	23	31	32	33	34
UTILIZATION	AC1	AC2	AC3		AC4	AC5	AC6
ABRASION RESISTANCE	≥ 500	≥ 1000	≥ 2000		≥ 4000	≥ 6000	≥ 8500
RESISTANCE TO STAINS	Min. 4 (group 1 ve 2) Min. 3 (group 3)		Min. 5 (group 1 ve 2) Min. 4 (group 3)				Min. 5 (group 1.2 ve 3)

Technical Specifications for laminate flooring **FLOORPAN and ARTFLOOR**

ADANA FACILITY

FLOORPAN ARTFLOOR <small>Laminate Flooring Laminate Flooring</small>		CLASSIC	REGISTER	SUN	DELUXE	STONE	STONEX	BOUJQUE	Test Metot
Thickness	mm	8	8	8	8	8	10	8	EN 13329+A1
Width	mm	197	193	197	197	402	402	193	EN 13329+A1
Lenght	mm	1205	1295	1205	1205	1206	1206	1295	EN 13329+A1
Class	-	32	32	31	32	33	33	33	EN 13329+A1
Abrasion resistance	-	AC4	AC4	AC3	AC4	AC5	AC5	AC5	EN 13329+A1
Thickness Swelling	%	≤18	≤18	≤18	≤18	≤15	≤15	≤15	ISO 24336
Resistance to impact	Small ball	N	≥12	≥12	≥8	≥12	≥15	≥15	EN 13329+A1
	Large ball	mm	≥750	≥750	≥500	≥750	≥1000	≥1000	EN 13329+A1
Warranty domestic / Commercial	years	15/10	15/10	10/5	15/10	30/15	30/15	25/15	
Resistance to staining		Min. 5 (group 1 and 2) Min. 4 (group 3)							EN 438
Surcafe Soundness	N/mm ²	≥1.25	≥1.25	≥1.0	≥1.25	≥1.25	≥1.25	≥1.25	EN 13329+A1
Lock strength	Lenght	kN/m	f _{0,2} ≥ 1	f _{0,2} ≥ 1	-	f _{0,2} ≥ 1	f _{0,2} ≥ 1	f _{0,2} ≥ 1	ISO 24334
	Width	kN/m	f _{s0,2} ≥ 2	f _{s0,2} ≥ 2	-	f _{s0,2} ≥ 2	f _{s0,2} ≥ 2	f _{s0,2} ≥ 2	
Effect of a castor chair	25,000 Cycles	No Damage							EN 425:2002
Effect of a furniture leg	-	No Damage							EN 424
Opening between elements	mm	≤0,20							EN 13329+A1
Height diffirence between elements	mm	≤0,15							EN 13329+A1
Humidity	%	4-10							EN 322
Formaldehyde emission	mg/m ³ h	≤3,5 (E1)							EN 12460-3

Technical Specifications for laminate flooring **FLOORPAN and ARTFLOOR**

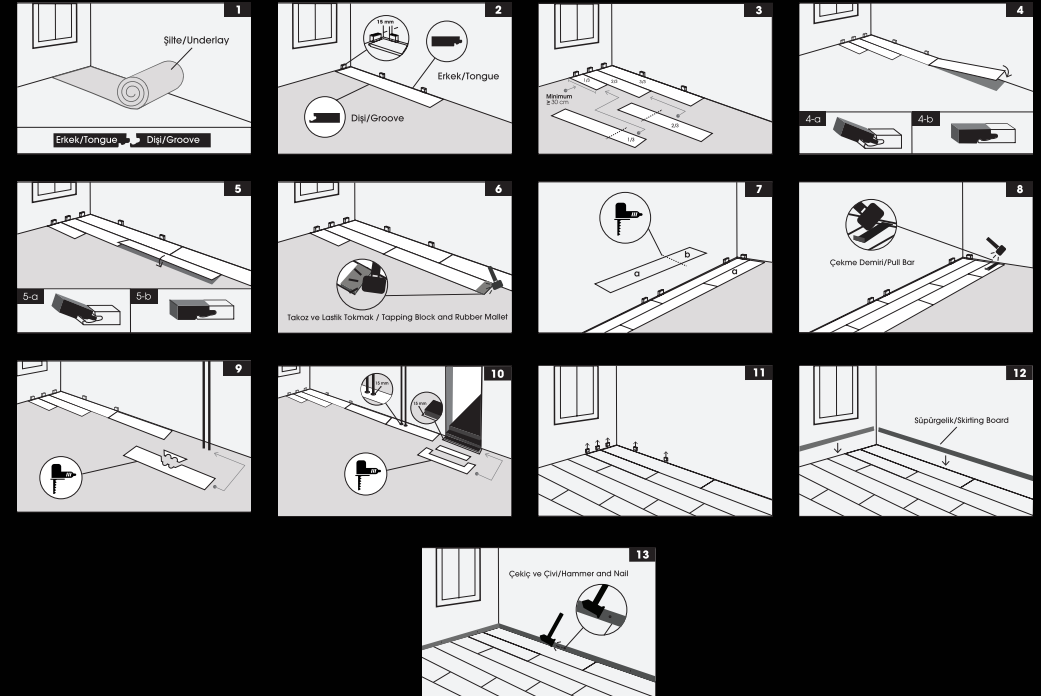
KASTAMONU FACILITY

		CLASSIC	SUN	NOVA	URBAN	NATURAL	Test Metot
Thickness	mm	8	8	6	8	10	EN 13329+A1
Width	mm	197	197	197	197	160	EN 13329+A1
Lenght	mm	1205	1205	1205	1205	1205	EN 13329+A1
Class	-	32	31	31	32	32	EN 13329+A1
Abrasion resistance	-	AC4	AC3	AC3	AC4	AC4	EN 13329+A1
Thickness Swelling	%	≤18	≤18	≤18	≤18	≤18	ISO 24336
Resistance to impact	Small ball	N	≥12	≥8	≥8	≥12	EN 13329+A1
	Large ball	mm	≥750	≥500	≥500	≥750	EN 13329+A1
Warranty domestic / Commercial	years	15/10	10/5	5/1	15/10	15/10	
Resistance to staining		Min. 5 (group 1 and 2) Min. 4 (group 3)					EN 438
Surcafe Soundness	N/mm ²	≥1.25	≥1.0	≥1.0	≥1.25	≥1.25	EN 13329+A1
Lock strength	Lenght	kN/m	f _{0,2} ≥ 1	-	-	f _{0,2} ≥ 1	ISO 24334
	Width	kN/m	f _{s0,2} ≥ 2	-	-	f _{s0,2} ≥ 2	
Effect of a castor chair	25,000 Cycles	No Damage					EN 425:2002
Effect of a furniture leg	-	No Damage					EN 424
Opening between elements	mm	≤0,20					EN 13329+A1
Height diffirence between elements	mm	≤0,15					EN 13329+A1
Humidity	%	4-10					EN 322
Formaldehyde emission	mg/m ³ h	≤3,5 (E1)					EN 12460-3

Technical Specifications for laminate flooring **FLOORPAN** and **ARTFLOOR**

GEBZE FACILITY

FLOORPAN <small>Laminat Panel</small> ARTFLOOR <small>Laminat Panel</small>		CLASSIC	SUN	Test Metot
Thickness	mm	8	8	EN 13329+A1
Width	mm	193	193	EN 13329+A1
Lenght	mm	1295	1295	EN 13329+A1
Class	-	32	31	EN 13329+A1
Abrasion resistance	-	AC4	AC3	EN 13329+A1
Thickness Swelling	%	≤18	≤18	ISO 24336
Resistance to impact	Small ball	N	≥12	EN 13329+A1
	Large ball	mm	≥750	EN 13329+A1
Warranty domestic / Commercial	years	15/10	10/5	
Resistance to staining		Min. 5 (group 1 and 2) Min. 4 (group 3)		EN 438
Surcufe Soundness	N/mm ²	≥1.25	≥1.0	EN 13329+A1
Lock strength	Lenght	kN/m	f _{0,2} ≥1	ISO 24334
	Width	kN/m	f _{0,2} ≥2	
Effect of a castor chair	25.000 Cycles	No Damage		EN 425:2002
Effect of a furniture leg	-	No Damage		EN 424
Opening between elements	mm	≤0,20		EN 13329+A1
Height difference between elements	mm	≤0,15		EN 13329+A1
Humidity	%	4-10		EN 322
Formaldehyde emission	mg/m ³ h	≤3,5 (E1)		EN 12460-3



A. Before Installation**Temperature and humidity conditions of the floor and areas where laminate flooring is to be installed:**

Temperature and humidity levels of the floor and areas where laminate flooring is to be installed must be in conformity with the suitable temperature and relative humidity conditions before installation, during installation and after the process. Laminate flooring must be kept for 48 hours before installation to fit into the areas where installation is to be made. (Temperature of the areas where installation is to be made must be minimum +18°C. Floor temperature must be minimum +15°C. Relative humidity rate of the areas where installation is to be made must be 40-70%).

Surface of the floor where installation is to be made: All surfaces on which laminate flooring is to be installed must be ready for the process, according to the technical conditions that must be taken into consideration.

Meet the below-specified conditions, during the floor is being checked:

- Make sure that the floor is completely dry.
- Check the surface flatness. (Fluctuation on the surface must be ≤ 2 mm in a meter.)
- Check the floor hardness.
- Cleaning the surface of the floor where installation is to be made. (dust, dirt, etc.)

Installation can be made on concrete or tiles as well:

Laminate flooring can be installed also on the floors where water-circulation under floor heating systems are used. In such a case, please use the craft paper instead of foam.

In addition to these, if electric under floor heating systems (check surface temperature) is placed in the cement or concrete layer (if the heating system is not above the concrete layer), it is suitable for installation. Surface temperature of the floor must not exceed maximum 28°C.

In case of getting the guarantee of the surface temperature of the floor will not exceed 28°C from company produces the under floor heating system, use of adjustable plate heating systems might be allowed as to be used as installation floor. Standard plate-based electric under floor heating systems which are available in the market cause the surface temperature to be much higher than 28°C, in case of excessive sudden heat changes. Because of that it is not suitable as installation floor.

Unstable floors are:

- Textile material (carpet, rug, etc.)
- PVC, linoleum, wood / laminate flooring, etc.

- Must not be installed on wet surfaces such as toilets, bathrooms or saunas.
- In vehicle indoor flooring.

Mandatory regulations for installation:

- PE foam must be laid on covering all surfaces of floors for moisture insulations of the floor. For the purpose of ensuring sound, heat and moisture insulation in the floor and eliminating the roughness of the floor (if less than 2 mm), it must be laid parallel to the long side of laminate flooring panels and to cover the all floor before installation. While laying the foam strips side by side, they must be laid in adjacent sides. (by not leaving any open areas.)
- As laminate flooring is installed on the floor in floating system, they are not screwed, nailed and not glued on the floor.
- During the installations, distance of the joints of two short sides definitely must be at least 300 mm. In case of products with a curved side and/or special pattern as manufactured by the factory (for example decor tile), you must apply by shifting equally according to the curved side and/or pattern.
- The distance between laminate flooring and fixed edges (walls, heater pipes, etc.) must be 15 mm in installation areas.
- Laminate flooring must be installed maximum 10 m to the length of the panels and maximum 8 m to the width of the panels in installation areas. Transition profiles must be used areas where these measurements exceed.
- Damaged or unusable panels must be eliminated before and during the installation.
- Our products are manufactured in multiple locations. Please pay attention to our products that are shipped from the same location before starting the installation. Please do not use the products from different locations in the same areas.
- Before starting the installation please group all the products on the bases of their production dates and start using installation preferring materials with the recent dates to each other within the same area.

B. Installation Process

- 1.(Figure 1) Place the underlay (foam) on the floor and check what tongue & groove profiles are.
2. (Figure 2) Start installation with the first line from the left corner of the room by meeting both tongue click sides of the panel to the wall. While starting the installation, place the distance protector (wedge of 15 mm thickness) that ensures distance with the wall.
3. (Figure 3) Place a whole panel whose tongue sides of laminate flooring face the corner. After that

LAMINATE FLOORING USER MANUAL

cut 2/3 of another panel and connect it to the whole panel whose tongue click sides face to the wall. After that cut 1/3 of another laminate flooring, connect it next to the 2/3 of laminate flooring. So cut side of the 2/3, 1/3 of the panels face to wall.

4. (Figure 4) To continue the created integrity, the tongue click of the short side of panel is placed on the groove click of the short side of the panel to get connected by 30 degrees angles and perform the installation by putting down to the floor. For details please check figures 4-a and 4-b.

5. (Figure 5) During installation lock the long side of the panels. For details please check figures 5-a and 5-b.

6. (Figure 6) Push to the tapping block by rubber mallet on the short side of the panel to lock the clicks. Not to damage the clicks on the panels avoid hard impact.

7. (Figure 7) By calculating the distance of wedge laminate flooring is marked as a and b, than it is cut and click on the long side of panel is get connected. If the part B is longer than 30 cm, it can be used at the beginning of the next line.

8. (Figure 8) Laminate flooring is fixed by hammering with pull bar and tapping block.

9. (Figure 9) During the installation, cut the section on the panels which faces the heating pipes by having 15 mm gap with fixed areas by convenient cutting tools. The pieces which were cut are glued to each other with convenient adhesive.

10. (Figure 10) Laminate flooring is cut on the sides by having minimum 15 mm gap according to stair step and fit them appropriately.

11. (Figure 11) Remove all the wedges.

12. (Figure 12) Skirting boards are cut depending on how they fit to be ready for installation.

13. (Figure 13) Fix the skirting boards to the walls, using a hammer and nails.

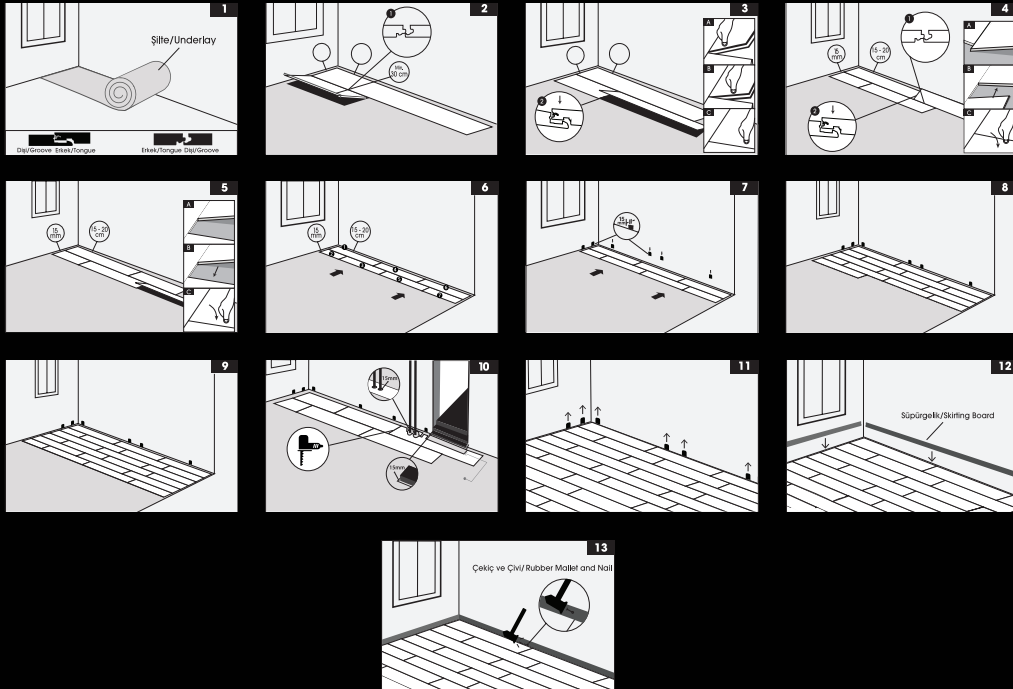
A.After Installation

- Pieces of plastic or felt must be placed under the fixed or moving furniture legs.
- Please change locations of the heavy furniture by lifting.
- Furniture with wheels, "couches and seats" wheels must be soft type.
- Please clean with a well squeezed micro fiber cloth that does not leave any residue, without letting laminate flooring's surface wet. Our products have TSE Laminate Flooring Standards Certificate and meet the requirements of the relevant standard. Unless otherwise stated on our products, "They are not water resistant and must be protected against exposure to water".
- Do not use any abrasive cleaners.
- Do not sand the laminate flooring.



UNIFIT[®]

PATENTED TECHNOLOGY



A. Before Installation

Temperature and humidity conditions of the floor and areas where laminate flooring is to be installed:

Temperature and humidity levels of the floor and areas where laminate flooring is to be installed must be in conformity with the suitable temperature and relative humidity conditions before installation, during installation and after the process. Laminate flooring must be kept for 48 hours before installation to fit into the areas where installation is to be made. (Temperature of the areas where installation is to be made must be minimum +18°C. Floor temperature must be minimum +15°C. Relative humidity rate of the areas where installation is to be made must be 40-70%).

Surface of the floor where installation is to be made: All surfaces on which laminate flooring is to be installed must be ready for the process, according to the technical conditions that must be taken into consideration.

Meet the below-specified conditions, during the floor is being checked:

- Make sure that the floor is completely dry,
- Check the surface flatness (Fluctuation on the surface must be ≤ 2 mm in a meter.)
- Check the floor hardness,
- Cleaning the surface of the floor where installation is to be made (dust, dirt, etc.)

Installation can be made on concrete or tiles as well;

Laminate flooring can be installed also on the floors where water-circulation under floor heating systems are used. In such a case, please use the craft paper instead of foam.

In addition to these, if electric under floor heating systems (check surface temperature) is placed in the cement or concrete layer (if the heating system is not above the concrete layer), it is suitable for installation. Surface temperature of the floor must not exceed maximum 28°C. In case of getting the guarantee of the surface temperature of the floor will not exceed 28°C from company produces the under floor heating system, use of adjustable plate heating systems might be allowed as to be used as installation floor. Standard plate-based electric under floor heating systems which are available in the market cause the surface temperature to be much higher than 28°C, in case of excessive sudden heat changes. Because of that it is not suitable as installation floor.

Unstable floors are;

- Textile material (carpet, rug, etc.),
- PVC, linoleum, wood / laminate flooring, etc.
- Must not be installed on wet surfaces such as toilets, bathrooms or saunas.

- In vehicle indoor flooring.

Mandatory regulations for Installation:

- PE foam must be laid on covering all surfaces of floors for moisture insulations of the floor. For the purpose of ensuring sound, heat and moisture insulation in the floor and eliminating the roughness of the floor (if less than 2 mm), it must be laid parallel to the long side of laminate flooring panels and to cover the all floor before installation. While laying the foam strips side by side, they must be laid in adjacent sides (by not leaving any open areas).
- As laminate flooring is installed on the floor in floating system, they are not screwed, nailed and not glued on the floor.
- During the installations, distance of the joints of two short sides definitely must be at least 300 mm. In case of products with a curved side and/or special pattern as manufactured by the factory (for example decor tile), you must apply by shifting equally according to the curved side and/or pattern.
- The distance between laminate flooring and fixed edges (walls, heater pipes, etc.) must be 15 mm in installation areas.
- Laminate flooring must be installed maximum 10 m to the length of the panels and maximum 8 m to the width of the panels in installation areas. Transition profiles must be used areas where these measurements exceed.
- Damaged or unusable panels must be eliminated before and during the installation.
- Our products are manufactured in multiple locations. Please pay attention to our products that are shipped from the same location before starting the installation. Please do not use the products from different locations in the same areas.
- Before starting the installation please group all the products on the bases of their production dates and start using installation preferring materials with the recent dates to each other within the same area.

B. Installation Process

1. (Figure 1) Place the underlay (foam) and check the male & female profiles on the long & short side.
2. (Figure 2) Place our first panel facing the male side to the wall by leaving space between 15-20 cm (to make installation easier) and by leaving space 15 mm on the short side of panel. Cut the 2nd panel by having minimum of 30 cm and install as shown. Please note that the distance between the short edge connections must be definitely minimum 30 cm during the installation.

3. (Figure 3) Fit the long side of the 3th panel, slide till short sides of the panels get connected by 30 degrees angles and perform the installation process slowly. For installation please check figures in order of 3-a, 3-b and 3-c.
4. (Figure 4) Fit the long side of 4th panel, slide till short sides of the panels get connected by 30 degrees angles and perform the installation process slowly. For installation please check figures in order of 4-a, 4-b and 4-c.
5. (Figure 5) Fit the long side 5th panel, slide till short side of the panels gets connected by 30 degrees angles and perform the installation process slowly. For installation please check figures in order of 5-a, 5-b and 5-c for flooring.
6. (Figure 6) Complete the process of two rows by installing diagonally.
7. (Figure 7) Fit the wedges (15 mm) to have gap between the walls and laminate flooring. Push all the groups of panels together towards the wall. Be sure about they lean on wedges.
8. (Figure 8) Beginning of the 3rd row, install the long side of panel and slide till short side of the panels get connected by 30 degrees angles and perform the installation process slowly.
9. (Figure 9) You may continue installation till whole process finished.
10. (Figure 10) During the installation, cut the section on the panels which faces the heating pipes by having 15 mm gap with fixed areas by convenient cutting tools. The pieces which were cut are glued to each other with convenient adhesive. Laminate flooring is cut on the sides by having minimum 15 mm gap according to stair step and fit them appropriately.
11. (Figure 11) Remove all the wedges.
12. (Figure 12) Skirting boards are cut depending on how they fit to be ready for installation.
13. (Figure 13) Fix the Skirting boards to the walls, using a hammer and nails.

C. After Installation

- Pieces of plastic or felt must be placed under the fixed or moving furniture legs.
- Please change locations of the heavy furniture by lifting.
- Furniture with wheels, couches and seats' wheels must be soft type.
- Please clean with a well squeezed micro fiber cloth that does not leave any residue, without letting laminate flooring's surface wet. Our products have TSE Laminate Flooring Standards Certificate and meet the requirements of the relevant standard. Unless otherwise stated on our products, "They are not water resistant and must be protected against exposure to water".
- Do not use any abrasive cleaners.
- Do not sand the laminate flooring.

Conditions Not Covered by Warranty

- Conditions not covered by warranty
 - Any elements which are damaged, unpacked and not in first quality are not covered by the warranty.
 - Delivery or installation of the products by unauthorized dealers, failure to comply with installation instructions and quality manual.
 - Damage caused by improper application that is inconsistent with maintenance and installation instructions.
- Manipulation on certificate of guarantee.
- Transfer of the certificate of guarantee to someone else for any reason.
 - The certificate of guarantee is not valid if the certificate together with the invoice or its photocopy is not submitted.
 - Kastamonu Entegre Ağaç Sanayi ve Ticaret AŞ reserves the right to inspect the product and to authorize third parties for inspection.
 - If the Floorpan Laminate Flooring is used other than foreseen cases, the rights and claims within the warranty will be canceled.
 - Out-of-warranty service and support services are provided by Kastamonu Entegre dealers for fee.

Important Notes

- Please do not accept damaged products or products with damaged package.
- Installation and service of the products should be done by expert technicians of authorized dealers. Get the approved certificate of guarantee together with the invoice.
- Ask for the brand “Kastamonu Entegre” for all auxiliary materials used (Skirting).
- In case of product return, décor equivalent of the product may be provided considering the existing stocks.
- All technical information about Floorpan Laminate Flooring is available at the “Floorpan Laminate Flooring User’s Manual” and you can consult the authorized dealers in case of necessity.

Suggestions for Maintenance, Usage and Cleaning

- Put a mat especially on the entrances, door sills and walkways with intense use. This application will increase the life of your product as materials such as sand and mud are abrasive.
 - Pieces made of plastic or felt should be put under the feet of fixed or moving furniture.
 - In order to maintain the moisture level of Floorpan Laminate Floor and for feeling comfortable, an environment with a relative humidity of about 50-60% and room temperature of about 20 °C is required. If humidity of the air falls below that value, the use of electronic air humidifier is recommended.
 - Floorpan Laminate Flooring is suitable for floor heating systems. However, the subfloor temperature must not exceed 28 °C. Also, moisture of the subfloor should not exceed 2% before the flooring installation. Subfloor tests and installations in the system should be made in accordance with the instructions given on the user’s manual.
 - Floorpan Laminate flooring should be cleaned with vacuum cleaner during daily maintenance.
 - Cleaning applications outside daily use should be done with only very well squeezed, lint-free microfiber cloth. Never leave it moist or wet for long periods of time. Prefer only suitable cleaning materials and wood cleaners. Do not use lacquer and chemical materials that form a layer. When you purchase Floorpan Laminate Flooring from the store, ask for “ Floorpan Laminate Flooring User’s Manual”.
- Floorpan Laminate Flooring is stainproof but special flooring cleaners can be used for the stains coming out hard.

Warranty Conditions

- The warranty period starts from the delivery date of the goods.
- Warranty period is 10 years for Floorpan Sun Laminate Flooring, 5 years for Floorpan Nova Laminate Flooring, 25 years for Floorpan Boutique Laminate Flooring and 15 years for Floorpan Urban, Floorpan Natural, Floorpan Register, Floorpan Classic Laminate Flooring.

The delivery date and notification date of products starts from the delivery date to the consumer together with the signed invoice and dispatch note.

- In case of manufacturing failure within the scope of warranty, both due to material or installation errors, the product should be repaired free of cost under any name including labor cost, price for replaced parts or any other name.
- In case of failure of the product within the warranty period, provided to be within the warranty period, the period for repair should be added to the warranty period.
- Product repair period is maximum 30 business days. This period starts from the date that the failure was notified to the service unit, in case the service unit is not available by the product seller, main dealer, regional dealer or manufacturer.
- For the problems that may arise with regard to the warranty document, application may be done to Ministry of Industry and Trade, General Directorate of Protection of Consumer and Competition.
- The warranty can not be transferred. The warranty provided is not valid for any purpose other than intended use.
- The warranty is valid for the specified period of time and only for the malfunction of the product. No rights and indemnities other than that can be claimed under any other name.
- Provided to be within the warranty period mentioned above, Floorpan laminate flooring should be replaced free of charge if the same fault is repeated more than twice or if different faults occur more than four times and repair can not be done.
- Floorpan laminate flooring products are under the mutual warranty of our manufacturer company and our main dealers.




INTERIOR
DESIGN STUDIO





With all technical details and 3D images, Kastamonu Entegre products are available on your mobile phones and tablets. Download IDS 3D (Interior Design Studio 3D) application at your application store now and experience the reality!

You can download IDS 3D by searching it at your application store or scanning the QR codes.

 www.keas.com.tr

 [KastamonuEntegre.A.S](#)

 [KeasKurumsal](#)

 [KastamonuEntegre A.S.](#)

 [kastamonuentegre](#)